

Esco Air Shower Pass Box  
Model EQU100-EAS-PB

## Pass Boxes and Transfer Hatches

*The Leading Solution for Controlled Environment Protection*





EPB-A504050 and EPB-A606060  
(standard pass box)

EQU/00-EAS-PB  
(air shower pass box)

EPB-S616161 and EPB-S454645  
(pharmaceutical grade transfer hatch)

Controlling the ingress of particulate contamination into cleanrooms and other controlled environments is paramount in order to maintain the integrity of products and processes. Personnel traffic is the

most important factor which must be controlled. Esco Pass Boxes and Transfer Hatches are a cost effective solution as they allow materials to be transferred into the controlled environment without actual

personnel movement. They may also be used to protect the external environment from egress of contamination, for example, in biological safety laboratory applications.

#### Available Models

Model	Internal Dimensions	Construction	Interlock	Air Shower
EPB-A504050	500 x 400 x 500 mm (19.7" x 15.7" x 19.7")	1.5 mm powder coated steel, non covered corners	Mechanical	-
EPB-A606060	600 x 600 x 600 mm (23.6" x 23.6" x 23.6")	1.5 mm powder coated steel, non covered corners	Mechanical	-
EPB-S616161	610 x 610 x 610 mm (24" x 24" x 24")	2 mm stainless steel, all covered corners	Mechanical	-
EPB-S454645	450 x 460 x 450 mm (17.7" x 18.1" x 17.7")	2 mm stainless steel, all covered corners	Mechanical	-
EQU/00-EAS-PB	800 x 500 x 600 mm (31.5" x 19.7" x 23.6")	1.5 mm powder coated steel, non covered corners	Electrical	✓

## Esco Pass Box

### Main Features

- Mechanical interlock is reliable, maintenance-free, fail safe and maintains cleanroom integrity by preventing both doors from being opened at the same time.
- All Esco products are manufactured for the most demanding controlled environment applications.
- All components are designed for maximum chemical resistance and enhanced durability for a long service life.
- The main body of the pass box is constructed of industrial-grade electrogalvanized steel.

- The pass box base surface is constructed of stainless steel, making the work zone easy to clean.
- Acrylic doors provide a clear view of the internal chamber.
- Standard 1 year warranty.

### Options and Accessories

- Flange for sealing the gap between the pass box and the cleanroom wall, when the cleanroom wall can support the weight of the pass box. (Set of 2 flanges).

Catalog Numbers:

EPA-A504050-FL for EPB-A504050

EPA-A606060-FL for EPB-A606060

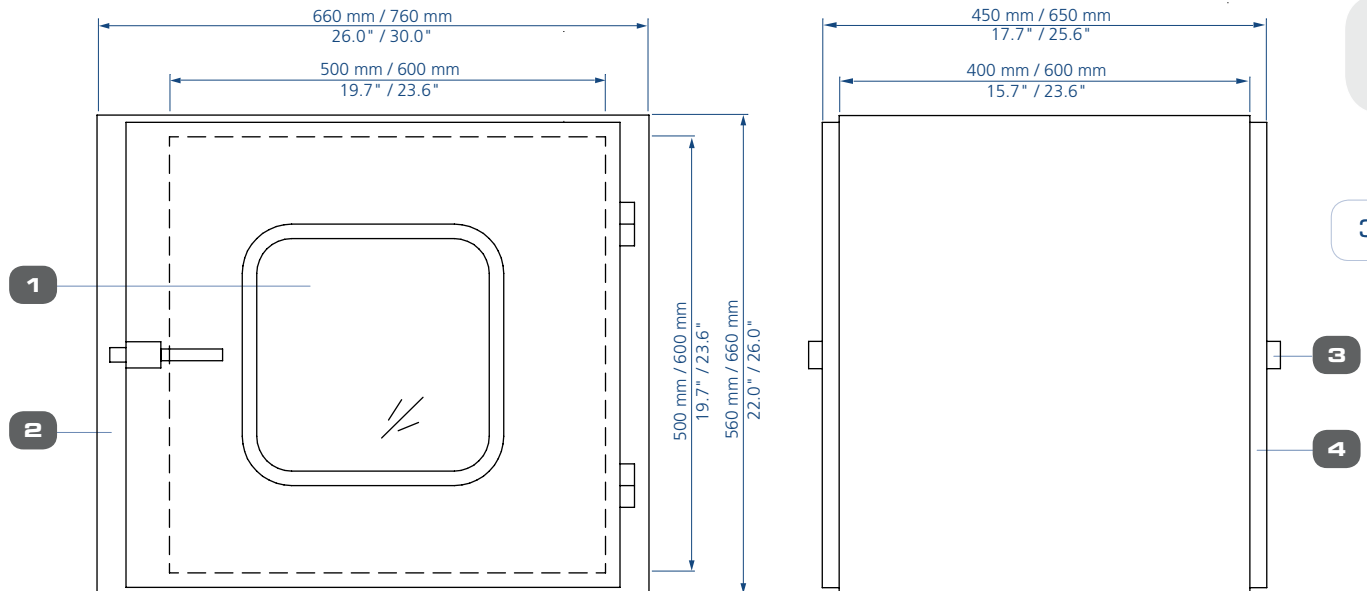
- Optional UV lamp, must be factory fitted, add "-U1" to the end of the model to order for 230VAC 50HZ models and add "-U2" to the end of the model for 115VAC 60HZ models (example: EPB-A606060-U1).
- Support stand (for cleanrooms with thin wall partitions, which cannot support the weight of the pass box) to mount the pass box to the floor. Specify mounting height when ordering.

Catalog Numbers:

EPA-A504050-SS for EPB-A504050

EPA-A606060-SS for EPB-A606060

## Esco Pass Box Technical Specifications



1. Acrylic panel
2. Interlock mechanism

3. Handle
4. Door

General Specifications, Esco Pass Box		
Model	EPB-A504050	EPB-A606060
External Dimensions (W x D x H)	660 x 450 x 560 mm / 26.0" x 17.7" x 22.0"	760 x 650 x 660 / 30.0" x 25.6" x 26.0"
Internal Work Area, Dimensions (W x D x H)	500 x 400 x 500 mm / 19.7" x 15.7" x 19.7"	600 x 600 x 600 mm / 23.6" x 23.6" x 23.6"
Net Weight	42.5 kg / 93.7 lbs	55.8 kg / 123 lbs
Shipping Weight	61.6 kg / 136 lbs	80.4 kg / 177 lbs
Shipping Dimensions, Maximum (W x D x H)	850 x 740 x 800 mm / 33.4" x 29.1" x 31.4"	830 x 820 x 870 mm / 32.6" x 32.2" x 34.2"
Shipping Volume, Maximum	0.5 m <sup>3</sup> (17.6 cu.ft.)	0.59 m <sup>3</sup> (20.8 cu.ft.)

**ESCO**

WORLD CLASS. WORLDWIDE.

## Esco Cleanroom Transfer Hatch

### Main Features

- Mechanical interlock is reliable, maintenance-free, fail safe and maintains cleanroom integrity by preventing both doors from being opened at the same time. The interlock design has been life-tested to 10,000 cycles to guarantee long service life.
- All Esco products are manufactured for the most demanding controlled environment applications.
- All components are designed for maximum chemical resistance and enhanced durability for a long service life.
- The main body of the pass box is constructed of pharmaceutical-grade stainless steel.
- The internal side walls of the pass box are constructed from a single piece of stainless steel, with covered corners for easy cleaning.
- Transparent 10 mm (0.3") tempered glass doors provide visibility into the interior. Frameless construction is easy to clean with no joints for contaminants to accumulate.
- Durable feather edge rubber gasketed door seals maintain cleanroom integrity and are easy to clean.
- Pass box hardware has been custom designed for reliable service, featuring large, durable hinges, and ergonomic handles.
- One stainless steel mounting flange is included.
- Extended 3 year warranty.

### Options and Accessories

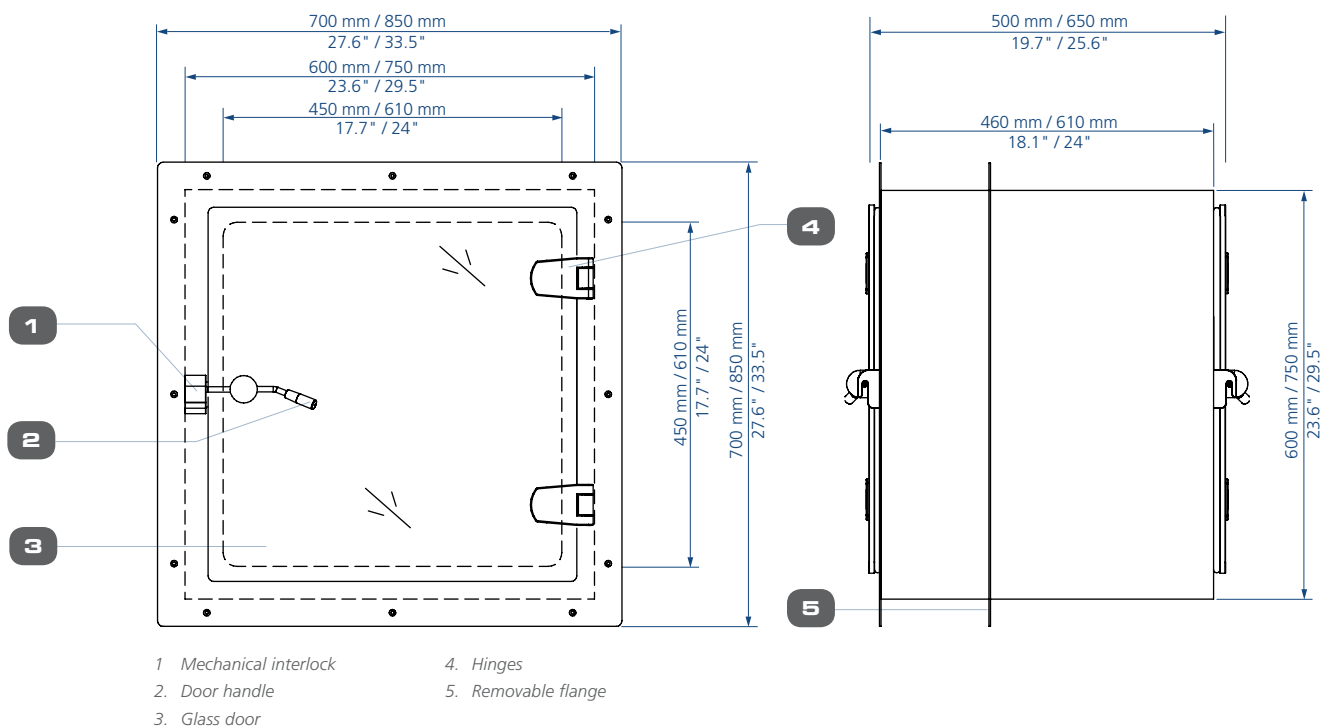
- Optional UV lamp, must be factory fitted, add "-U1" to the end of the model to order for 230VAC 50HZ models and add "-U2" to the end of the model for 115VAC 60HZ models (*example: EPB-A616161-U1*).
- Support stand in lieu of flange (*specify mounting height when ordering*).

#### Catalog Numbers:

EPA-B616161-SS for EPB-S616161

EPA-B454645-SS for EPB-S454645

### Esco Cleanroom Transfer Hatch Technical Specifications



## General Specifications, Esco Cleanroom Transfer Hatch

Model	EPB-S616161	EPB-S454645
External Dimensions (W x D x H)	750 x 650 x 750 mm (29.5" x 25.6" x 29.5")	600 x 500 x 600 mm (23.6" x 19.7" x 23.6" )
Internal Work Area, Dimensions (W x D x H)	610 x 610 x 610 mm (24" x 24" x 24")	450 x 460 x 450 mm (17.7" x 18.1" x 17.7")
Net Weight	54.2 kg (119 lbs)	33 kg (72 lbs)
Shipping Weight	64.3 kg (142 lbs)	40 kg (88 lbs)
Shipping Dimensions, Maximum (W x D x H)	850 x 750 x 780 mm (33.4" x 29.5" x 30.7")	730 x 700 x 730 mm (28.7" x 27.5" x 28.7")
Shipping Volume, Maximum	0.49 m <sup>3</sup> (17.3 cu.ft.)	0.37 m <sup>3</sup> (13.1 cu.ft.)

## Esco Air Shower Pass Box

### Main Features

- Built-in air shower significantly reduces surface contamination on materials entering or exiting the controlled environment. Materials entering or exiting the controlled environment are "scrubbed" by high velocity ULPA-filtered air jets with velocities of 25 m/s (4921 fpm). Contaminated air is then drawn through the base within the unit, filtered and recirculated.
- An array of stainless steel nozzles direct high-velocity jets within the chamber.
- Air shower duration is adjustable. Standard factory pre-set is 12 seconds in both directions.

### Air Shower Pass Box Construction

- Robust construction qualifies the air shower pass box for the most demanding controlled environment applications. The unit is fully assembled and ready to install and operate when shipped. All components are designed for maximum chemical resistance and enhanced durability for a long service life.
- Electrical interlock maintains cleanroom integrity by preventing both doors from being opened at the same time.
- The air shower is constructed of electrogalvanised steel sheets with an abrasion resistant oven-baked powder coated finish.

- The pass box base surface is constructed of perforated stainless steel, making the work zone easy to clean.
- Acrylic doors provide a clear view of the internal chamber.

### Blower and Filtration Systems

- Esco Air Shower Pass Boxes use German made ebm-papst® permanently lubricated, centrifugal motor/blowers with external rotor designs. Selected for energy efficiency, compact design, and flat profile, the completely integrated blower assembly optimizes motor cooling, with unified rotating parts and overall component balance for smooth, quiet, vibration-free operation. Weight is equally distributed to all bearings to extend bearing life.

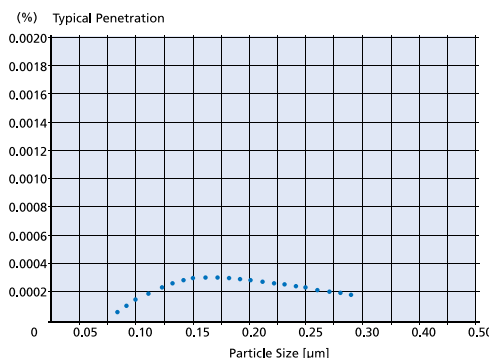
- ULPA filter(s) provide 99.999% typical efficiency for particle sizes at 0.3 microns. Esco Air Shower filters meet the IEST-RP-CC001.3 recommended practice for HEPA performance (USA), and EN 1822 for H13 performance (EU).
- A disposable pre-filter with 85% arrestance extends the life of the main filter.

### Warranty

- All Esco Air Shower Pass Boxes are covered by 1 year warranty. Contact your local Sales Representative for warranty details.

### Options and Accessories

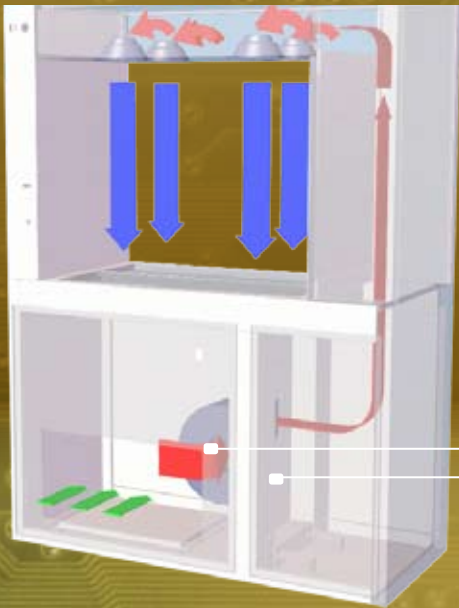
- Optional UV lamp, must be factory fitted, specify when ordering.



### Esco ULPA Filter Efficiency

Esco cabinets use ULPA filters (per IEST-RP-CC001.3) instead of conventional HEPA filters commonly found in cleanroom product. While HEPA filters offer 99.99% typical efficiency at 0.3 micron level, ULPA filters provide >99.999% typical efficiency for particle sizes of 0.1 to 0.3 micron level.

## Esco Air Shower Pass Box Airflow Diagram



Blower

ULPA Filter

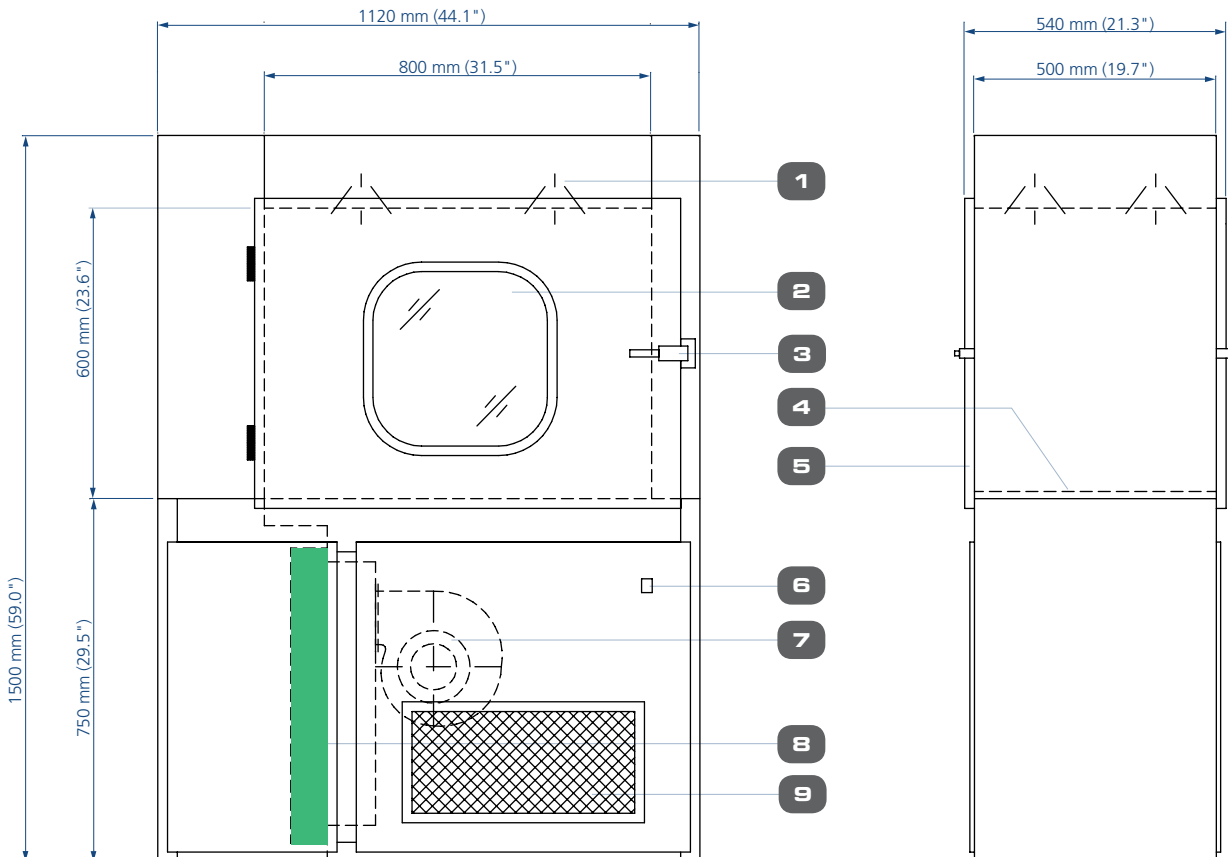
■ ULPA-filtered air

■ Unfiltered / Potentially contaminated air

■ Room air / Inflow air

- Air is forced by the blower(s) through ULPA filter(s) which are 99.999% efficient against particles of 0.3 microns.
- Filtered air is ejected through nozzles at high velocities into the chamber. These turbulent air streams disperse particulate matter on all surfaces.
- Dispersed particulate matter migrate with the air stream towards the lower areas in the air shower chamber.
- The air is continuously filtered and recirculated.

## Esco Air Shower Pass Box Technical Specifications

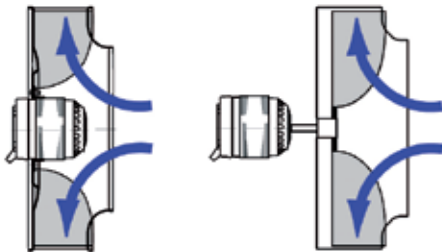


- |                                    |                       |
|------------------------------------|-----------------------|
| 1 Nozzles (4 nos)                  | 6. Operating switches |
| 2. Acrylic panel                   | 7. Blower             |
| 3. Handle                          | 8. ULPA filter        |
| 4. Perforated stainless steel base | 9. Pre-filter         |
| 5. Door                            |                       |

## General Specifications, Esco Air Shower Pass Box

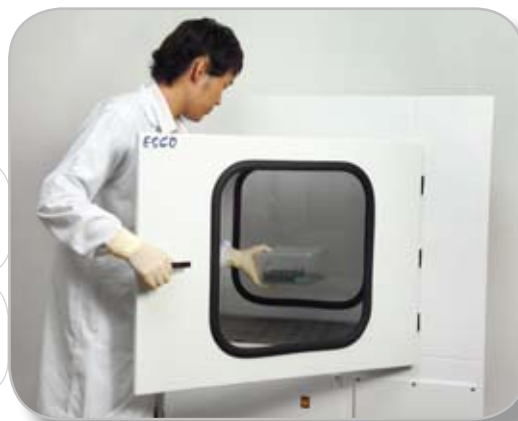
Model	EQU/00-EAS-PB	
External Dimensions (W x D x H)	1120 x 540 x 1500 mm (44.1" x 21.3" x 59.0")	
Internal Work Area, Dimensions (W x D x H)	800 x 500 x 600 mm (31.5" x 19.7" x 23.6")	
Air Change	1360 / hr	
Air Velocity (m/s)	25 m/s (4921 fpm)	
Number of Nozzles	4	
Air Shower Duration (seconds)	Factory setting at 12 seconds (adjustable)	
Pre-Filter	Washable non-woven polyester fibers with 85% arrestance and 20% efficiency	
ULPA Filter Typical Efficiency	99.999% at particle size 0.3 µm	
Main Body	1.5 mm electrogalvanised steel / White oven-baked epoxy powder-coated finish	
Electrical *	Voltage	220 - 240 V, AC, 50 Hz, 1Ø
	Cabinet Power / Amp	250 W / 1.2 A
	BTU / Hr	510
Net Weight	130 kg (286 lbs)	
Shipping Weight	164.3 kg (362 lbs)	
Shipping Dimensions, Maximum (W x D x H)	1120 x 570 x 1650 mm (44.0" x 22.4" x 64.9")	
Shipping Volume, Maximum	1.05 m <sup>3</sup> (37 cu.ft.)	

\* Additional voltages may be available; contact Esco for ordering information.



### Esco Centrifugal Fan with External Rotor Motor (left) vs. Conventional Fan with Standard Motor (right)

- Esco cabinets use German made **ebm-papst**® permanently lubricated, centrifugal motor/blowers with external rotor designs.
- Integrated blades narrow the profile and eliminate need for a motor shaft.
- Motors are selected for energy efficiency, compact design, and flat profile. The completely integrated assembly optimizes motor cooling.
- All rotating parts are unitized and balanced for smooth, quiet, vibration-free operation.





**Esco Containment, Clean Air and Laboratory Equipment Products**

- Biological Safety Cabinets, Class II, III
- Fume Hoods, Conventional, High Performance, Ductless Carbon Filtered
- Laminar Flow Cabinets, Horizontal, Vertical, PCR
- Animal Containment Workstations
- Hospital Pharmacy Isolators, Cytotoxic Safety Cabinets
- Specialty Workstations: *In-Vitro* Fertilization, Powder Weighing
- PCR Thermal Cyclers, Conventional, Real-Time
- Cleanroom Fan Filter Units, Modular Rooms, Air Showers, Pass Thrus

*Since 1978, Esco has emerged as a leader in the development of controlled environment, laboratory and cleanroom equipment solutions. Products sold in more than 100 countries include biological safety cabinets, fume hoods, ductless fume hoods, laminar flow clean benches, animal containment workstations, cytotoxic cabinets, hospital pharmacy isolators, and PCR cabinets and instrumentation. With the most extensive product line in the industry, Esco has passed more tests, in more languages, for more certifications, throughout more countries than any biosafety cabinet manufacturer in the world. Esco remains dedicated to delivering innovative solutions for the clinical, life science, research and industrial laboratory community. [www.escoglobal.com](http://www.escoglobal.com).*

NSF / ANSI 49 Biological Safety Cabinets • Animal Containment Workstations • Fume Hoods • Clean Benches



WORLD CLASS. WORLDWIDE.

Esco Technologies, Inc. • 2940 Turnpike Drive, Units 15-16 • Hatboro, PA 19040, USA  
 Toll-Free USA and Canada 888-375-ESCO • Tel 215-441-9661 • Fax 215-441-9660  
[us.escoglobal.com](http://us.escoglobal.com) • [usa@escoglobal.com](mailto:usa@escoglobal.com)

Esco Micro Pte. Ltd. • 21 Changi South Street 1 • Singapore 486 777  
 Tel +65 6542 0833 • Fax +65 6542 6920 • [mail@escoglobal.com](mailto:mail@escoglobal.com)  
[www.escoglobal.com](http://www.escoglobal.com)

Esco Global Offices | Singapore | Philadelphia, USA | Leiden, The Netherlands | Salisbury, UK  
 Kuala Lumpur, Malaysia | Beijing, Shanghai & Guangzhou, China | Mumbai, India | Manama, Bahrain